



Art

Pablo Picasso 1881-1973

Surrealism/Expressionism/Cubism

Year 4 Unit 1

Key Vocabulary:

Core Knowledge

Surrealism	An Art movement where artists painted from their imagination. The images look as though they are from a dream or nightmare.
Expressionism	A style of painting, music, or drama in which the artist seeks to express the inner world of emotion rather than external reality.
Cubism	Developed by Pablo Picasso and Georges Braque, the style is characterised by fragmented subject matter deconstructed in such a way that it can be viewed from multiple angles simultaneously.

Technical Vocabulary

Charcoal	Charcoal is a black crumbly drawing material made of carbon and often used for sketching and under-drawing for paintings, although can also be used to create more finished drawings.
Oil pastels	An oil pastel is a painting and drawing medium formed into a stick which consists of pigment mixed with a binder mixture of non-drying oil and wax.
Tone	The lightness or darkness of something.
Monochrome	A monochromatic object or image uses shades of limited colours, eg. grey, black and white.

Key Works of Art

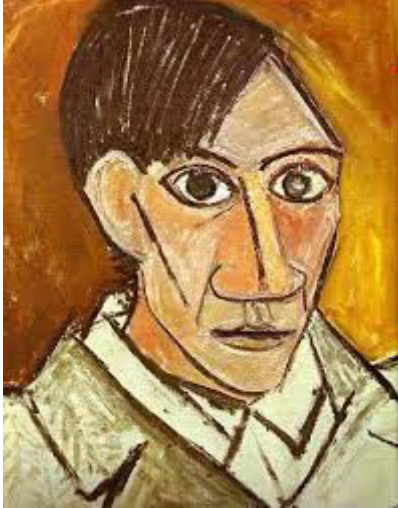


Marie-Thérèse, Face and Profile (Paris, 1931)



The Weeping Woman (1937)

Biography



Pablo Picasso 1881-1973

- Pablo Ruiz Picasso was born October 25, 1881, Málaga, Spain.
- He was a Spanish expatriate painter, sculptor, printmaker, ceramicist, and stage designer.
- Pablo Picasso was the son of José Ruiz Blasco, a professor of drawing.
- Picasso's talent for drawing began around the age of 10, when he became his father's pupil. From this point onwards, he surpassed his father's abilities.
- His father provided him with models and support for his first exhibition there at age 13.
- When he was fourteen Pablo attended a famous art school in Barcelona. A few years later he went to another school in Madrid.
- Picasso was bored with the classic teachings of art school. He didn't want to paint as people has always painted. He wanted to create something new.
- In 1901, Picasso's close friend died. He became very sad. Around the same time, he began painting in Paris. For the next four years his paintings were dominated by the colour blue. Many of the subjects were sad looking and he painted people with elongated features and faces.
- Picasso got over his depression and fell in love with a French model. He began to use warmer colours in his paintings including pinks, reds, oranges, and beiges. He also began to paint happier scenes.
- In 1907 Picasso began to experiment with a new style of painting. He worked with another artist named Georges Braque. By 1909 they had created a completely new style of painting called Cubism.
- In Cubism the subjects are studied and broken up into different sections. Then the sections are put back together and painted from different perspectives and angles.
- In 1912 Picasso began to combine Cubism and collage. This was where he would use sand or plaster in his paint to give it texture.
- In 1921 he went through a period of painting more classical style paintings.
- Around 1924 Pablo became interested in the Surrealist movement. Surrealist paintings weren't supposed to make any sense. .
- He died in 1973.

