



# The Kent Secondary Admissions Procedure 2020/21



## Parent Guide

- Application for a school place
  - Tests
  - Selection Process

## Introduction:

The current situation caused by Coronavirus has left us with a great deal of uncertainty regarding selection for Grammar School from September 2021.

KCC and the local grammar schools have proposed the following dates and timescales in this pack with the presumption that things will have returned to a more “normal” way of working by September.

Please be advised that all information within this pack is subject to change depending on the situation and government guidance at the time. We will do all we can to keep schools informed and as up to date as possible should any further information come to light.

Should your child have a special educational need that may need additional access arrangements, it is the responsibility of the parents to apply for this in consultation with their child’s primary school. Please contact our SENCO MRs Alldis to discuss this further by phoning the school or emailing [zoe.Alldis@warden-house.kent.sch.uk](mailto:zoe.Alldis@warden-house.kent.sch.uk)

Please contact [office@warden-house.kent.sch.uk](mailto:office@warden-house.kent.sch.uk) should you have any specific questions after reading this pack.

Best wishes

Mr Hackett

## KCC Statement:

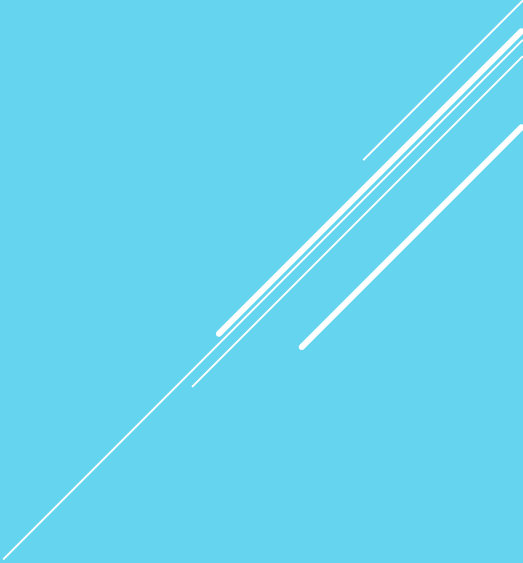
We understand that many of you with children in year 5 are very anxious to know what will happen about the Kent Test when the new school year starts in September. We are carefully considering what might be deliverable, depending on advice from central government as the pandemic runs its course and decisions are made about the easing of lockdown for children of primary school age. Many factors could change between now and the end of term and this means that we are currently unable to tell you exactly how we will assess children for grammar school in the new academic year. We can confirm, however, that we will need some way to identify which children are eligible.

Testing has the benefit of being available to the thousands of grammar school applicants we normally assess every year, however recently they have arrived in Kent and wherever they usually study, even if they are home educated, so it would be the most straightforward option if it is possible. Whatever is decided, we need to be confident that we can keep the risk to children and their teachers as low as possible, allowing grammar schools meet their legal obligations in a fair and transparent way, while allowing us to stay within the national timetable for coordinating school admissions.

## KCC Statement Continued:

Familiarisation material for the Kent Test can also be found on our [Kent Test page](#).

We will update the website for everyone's benefit when we have received further guidance from the Department for Education and there is a clearer understanding of what arrangements may be possible. In the meantime, we would ask that parents monitor the Kent Test page for updates, rather than sending individual enquiries. We do understand that uncertainty is difficult, especially for children, but we are unable to confirm what arrangements will be in place until there is a clearer understanding of how children are likely to return to school in greater numbers.




# Timescale

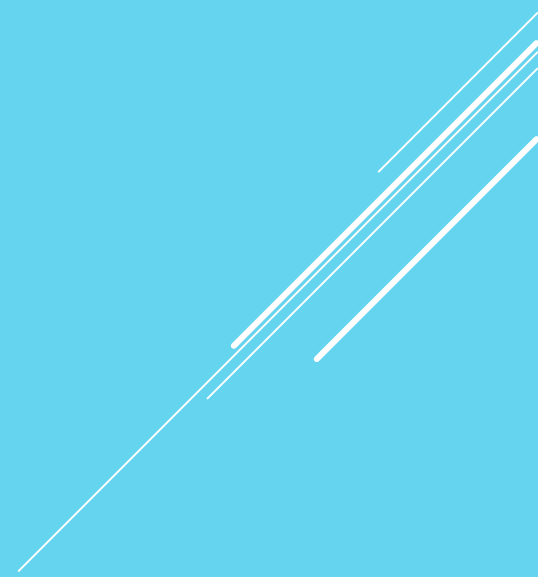


- **1st June – 1st July 2020:** Register your child for testing  
<http://www.kent.gov.uk/ola>
- **Thurs. 10<sup>th</sup> September 2020:** All tests take place
- **Thurs 15<sup>th</sup> October 2020 at 4pm:** The decision regarding placement at Grammar or High School posted or emailed (letters to arrive on 16<sup>th</sup> October)
- You can also [log in](#) to view your child's Kent Test 11+ assessment and test scores after this time.
- **31<sup>st</sup> October:** Closing date for SCAF (Secondary Common Assessment form)
- **Monday 1<sup>st</sup> March 2021:** - Offer letter posted to parents (letters to arrive on or after 3<sup>rd</sup> March 2020)

# The LEA will act as a clearing house for all applications

1. Where a child is eligible for a place at only one of the nominated schools, that school will be offered.
  2. Where a child is eligible for a place at two or more of the nominated schools, they will be allocated a place at whichever of these is the highest ranked preference.
  3. Where a child is not eligible for a place at any of the nominated schools, the child will be allocated a place at the nearest appropriate school with a vacancy.
- 

- You can only appeal to a school you have nominated on your child's SCAF form
- Parents must confirm their acceptance of the school offered
- If you are refused a place at your preferred school you can request to be placed on a waiting list or could appeal against the decision



# In Summary

## Stage 1

Parents register their child to take the Kent Test by 1<sup>st</sup> July 2020

## Stage 2

Children sit the Kent test in September and parents are notified of the outcome in October 2020

## Stage 3



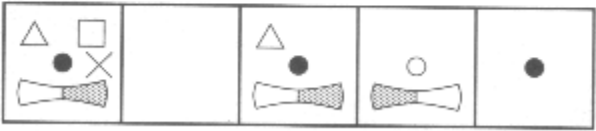

Parents complete The SCAF in October and are notified of the outcome in March 2021



# How PESE Test Works

- New test introduced in 2015 produced by Granada Learning Assessment
- No Practice test – just practice questions
- English and Maths Test in multiple choice format (c.60 minutes plus admin time, two separate sections each with introductory practice items, English first);
- Reasoning Test in multiple choice format (c.60 minutes plus admin time, one Verbal-Reasoning section, one non-verbal reasoning and one special reasoning test.
- Writing exercise 40 mins

# Non- Verbal + Spatial Reasoning

|   |  |
|---|--|
| <p><b>11</b></p>   |  <p>a b c d e</p>  |
| <p><b>12</b></p>  |  <p>a b c d e</p> |

# Verbal Reasoning

This tests the children's ability to reason with words and language

Find the next pair of letters in this sequence: CQ  
DQ EP FP ....

Answer: **GO**

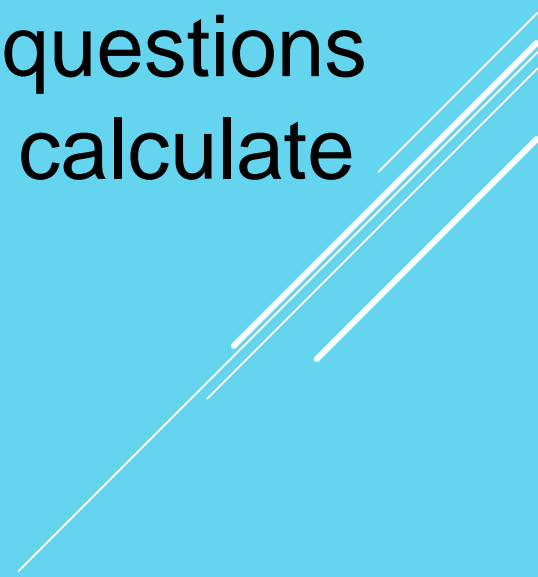
If the code for FOOT is **ENNS**, what is the code for  
**TOE**?

Answer: **SND**

# Mathematics

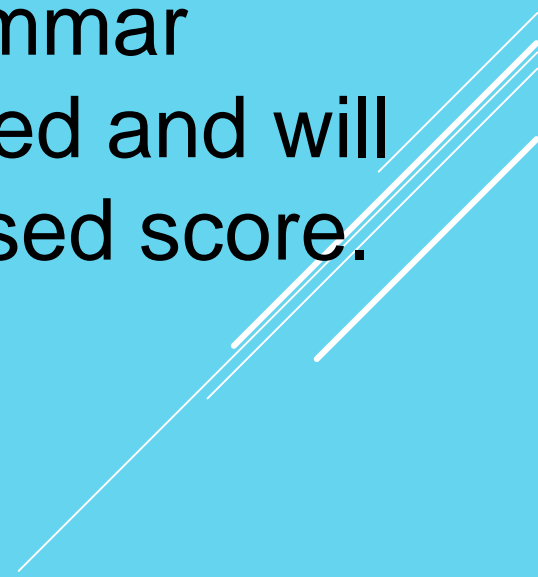
This test is similar to the end of Year 6 tests, however the answers are multiple-choice.

The prominent difference is that questions will push for the higher ability to calculate and reason.

A decorative graphic consisting of several parallel white lines of varying lengths, slanted diagonally from the bottom right towards the top right, located in the lower right quadrant of the slide.

# Writing

This test is a short writing activity under test conditions. This test will only be looked at where a child's test scores are just below the threshold for grammar selection. This will not be marked and will not affect your child's standardised score.

A decorative graphic consisting of several parallel white lines of varying thicknesses, slanted diagonally from the bottom right towards the top left, located in the lower right quadrant of the slide.

# To be selected as suitable for grammar school:

- In 2018 a child needed to score an aggregate of over 323 in all tests to be assessed as grammar.
- The threshold for grammar selection was 107 on each test.
- Please note: this is different to our internal CAT tests where the grammar threshold would be between 118-120 based on the older pre-2015 tests.
- If your child falls just below the threshold, and the Headteacher (in consultation with class teachers) decides to make an appeal, their writing task will be considered as further evidence alongside work in school books.

# Dover Girls and Boys Entrance Tests

- Saturday 12<sup>th</sup> September 2020 - entrance test for Dover Girls and Boys Grammar Schools
- Parents MUST contact each school separately to register by the end of June. Please check carefully the deadlines for both of the schools.
- Usually four tests between 25 and 50 minutes each
- Verbal Reasoning, Non-Verbal Reasoning Mathematics and English.
- Contact the schools' directly or check their websites for dates of open evenings and registration forms.
- Dover Girls Details:  
<http://www.dggs.kent.sch.uk/368/admissions-1>
- Dover Boys Details:  
<https://www.dovergramboys.kent.sch.uk/1135/admissions-202021-intake>

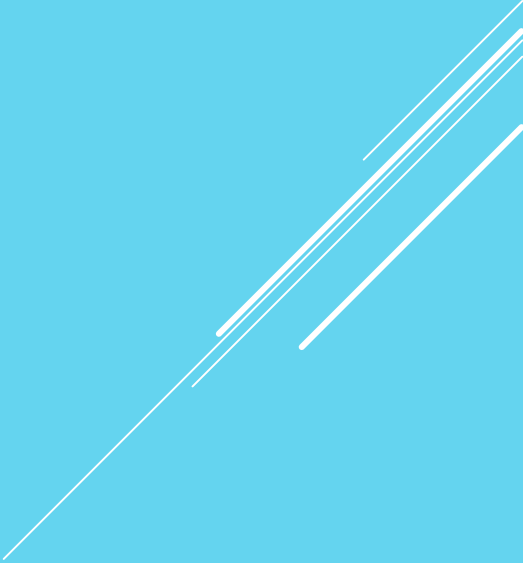
# Sir Roger Manwood's School

- <http://www.manwoods.co.uk/admissions/y7-admissions/>



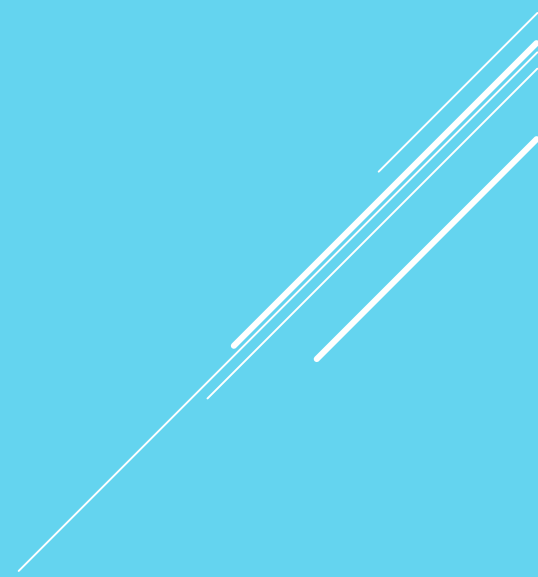
# Goodwin Academy

<http://www.goodwinacademy.org.uk/admissions-prospectus/>


- New Grammar stream started in Sept 2019 for approx. 30 pupils. This may continue in 2021. Contact the school for further details.
  - Nurture provision still exists to support SEN pupils
- 

# Sandwich Technology School

<http://www.sandwich-tech.kent.sch.uk/137/admissions>



# What happens next?

- If you wish your child to attend a grammar school you must register them for the Kent Test by Wednesday 1<sup>st</sup> July.
  - Ensure you look as closely as is possible at all the schools you are interested in, if you are interested in Dover Boys or Girls, enrol to take their entrance tests.
  - Remember, the decision is yours, although you must involve your child in the discussions and hear their opinions.
- 

# Contacts

<http://www.kent.gov.uk/education-and-children/schools/school-places/kent-test>

or email

[office@warden-house.kent.sch.uk](mailto:office@warden-house.kent.sch.uk)



# Finally...



This can be a potentially pressure laden time for you and your child made even more stressful by the current Coronavirus pandemic.

Use our advice and guidance, talk to us and one another about the issues.

When we visit our Year 7 children, children are always well settled and enjoy the new chapter in their education!

